

Arrival to UTO KULM

BY PUBLIC TRANSPORT

Public transportation is the best way to access the car-free Uetliberg.

From Zurich main station, take the Uetliberg-Bahn SZU (S10) on platform 22. The SZU takes only 20 minutes to reach the Uetliberg final station.

A seven-minute walk takes you from the Uetliberg station to the hotel. Upon request, persons with disabilities or the luggage of hotel and seminar guests can be picked up at the Uetliberg station. Please inform us of your arrival time a day in advance.

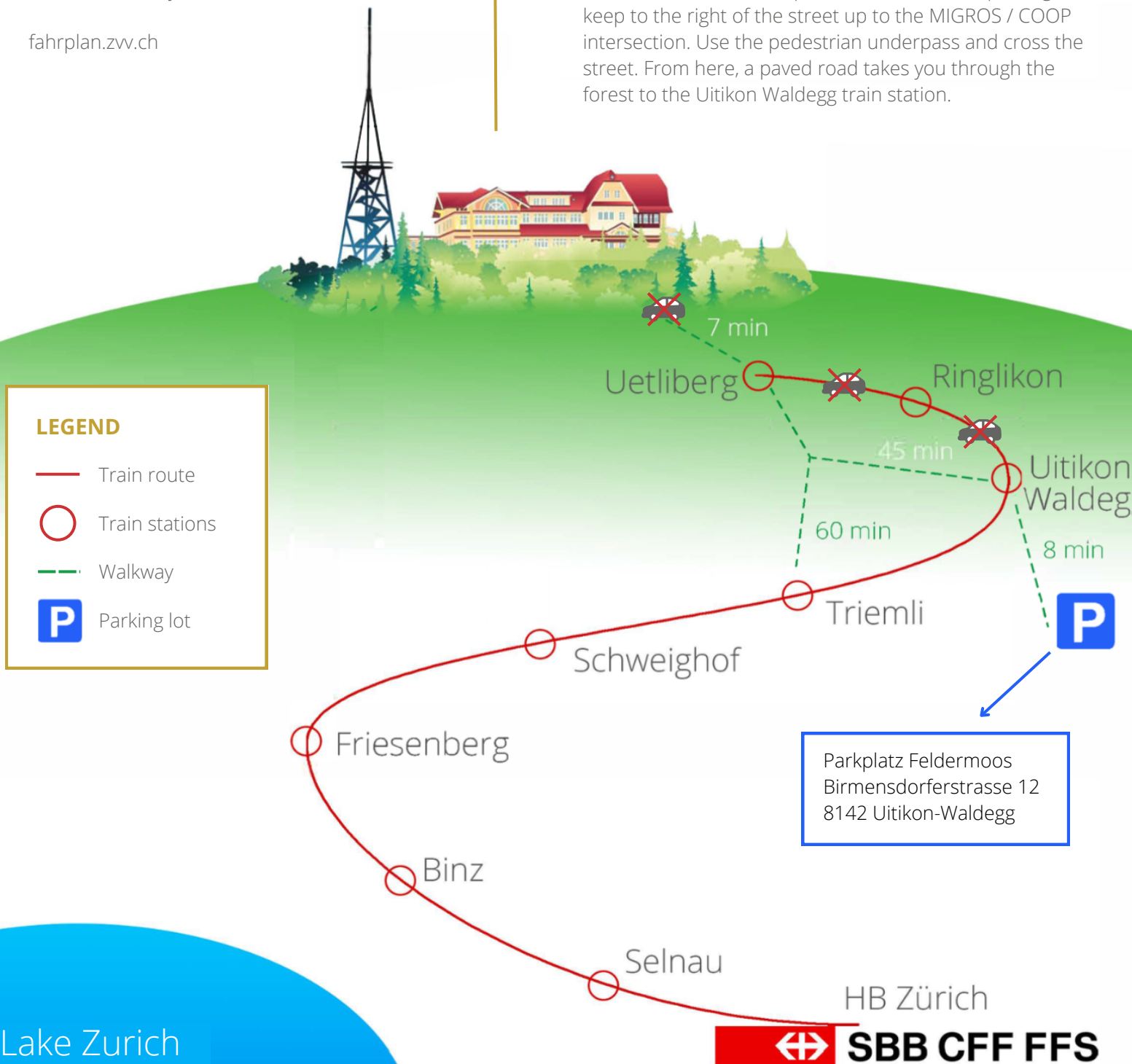
fahrplan.zvv.ch

BY CAR

The UTO KULM is in a car-free local recreation area – the Uetliberg. There are various parking options in Zurich and the surroundings, but ultimately you can only reach our hotel with the SZU or on foot.

Directions from the Feldermoos parking lot:

1. Pedestrian path seven minutes via nature trail: Cross the pedestrian bridge and take the nature trail through the forest to the Uitikon-Waldegg train station. An SZU train (S10) goes from here to the Uetliberg terminal station every 30 minutes on weekdays and every 20 minutes on weekends.
2. Ten-minute walk via the paved road: From the parking lot, keep to the right of the street up to the MIGROS / COOP intersection. Use the pedestrian underpass and cross the street. From here, a paved road takes you through the forest to the Uitikon Waldegg train station.



LEGEND

- Train route
- Train stations
- - - Walkway
- P Parking lot

Parkplatz Feldermoos
Birmensdorferstrasse 12
8142 Uitikon-Waldegg

HB Zürich

SBB CFF FFS

Lake Zurich